

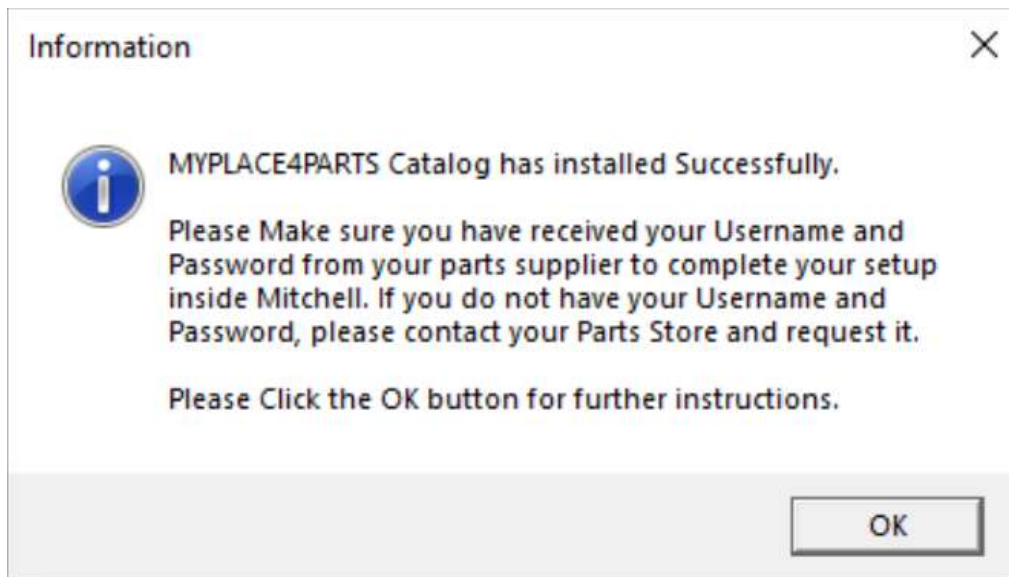


**Installing and Configuring  
AutoValue/Bumper to Bumper MyPlaceForParts  
within Mitchell Manager SE  
and ManagerPlus SE v7.5  
Revised 03/31/2019  
aesWebServer Installation**

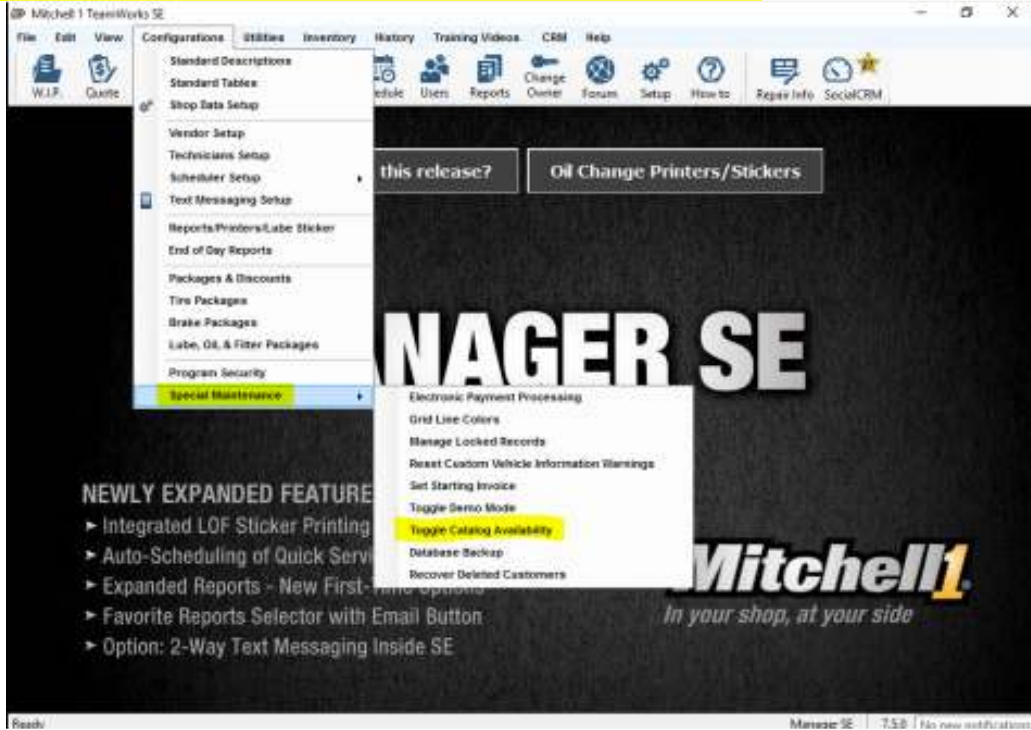
PLEASE MAKE SURE YOU ARE RUNNING MITCHELL VERSION 7.5 OR GREATER IF YOU ARE NOT PLEASE CONTACT MITCHELL SUPPORT FOR AN UPGRADE

THIS INSTALL REQUIRES A USER NAME AND PASSWORD. IF YOU DO NOT HAVE ONE PLEASE CONTACT YOUR PARTS STORE

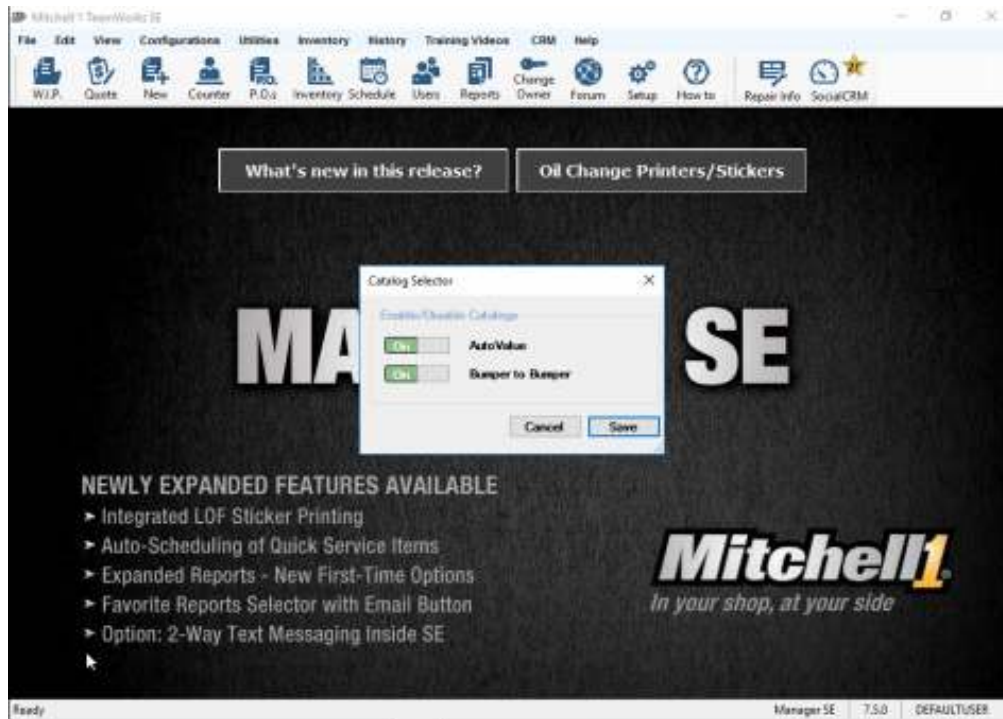
STEP 1. PLEASE CLOSE MITCHELL then Click Download AND SAVE THE FILE. Then run aesInstallv2\_mit and install MYPLACE4PARTS catalog.



STEP 2. OPEN MITCHELL and Click on Configuration / Special Maintenance / Toggle Catalog Availability. MAKE SURE YOU ARE IN THE MITCHELL SPLASH SCREEN AS SEEN BELOW

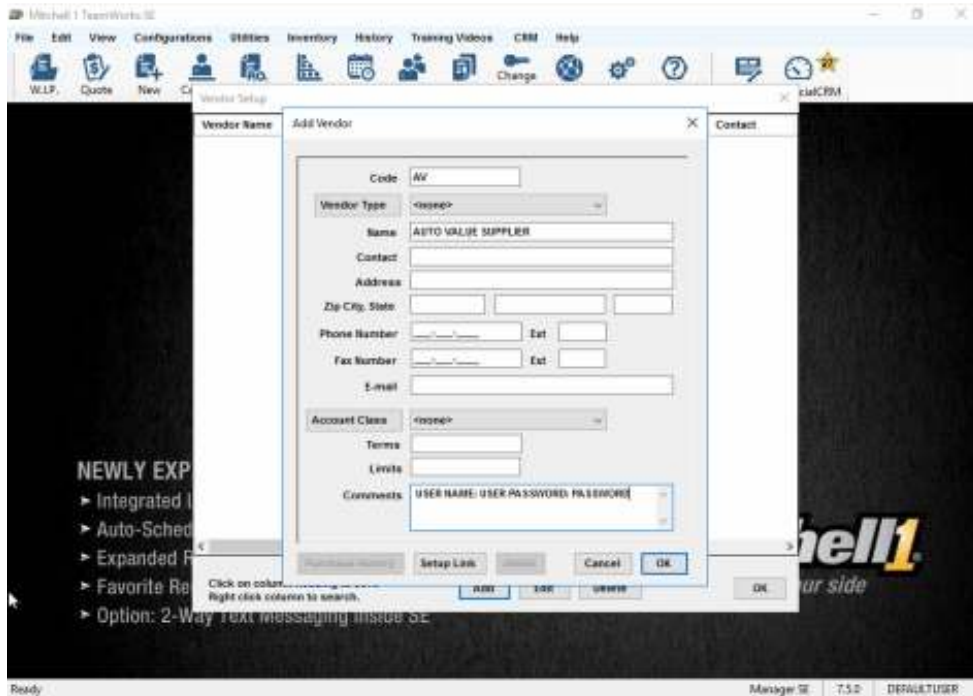


STEP 3. TURN ON the Catalog/Catalogs you wish to use. CLICK SAVE TO CONTINUE

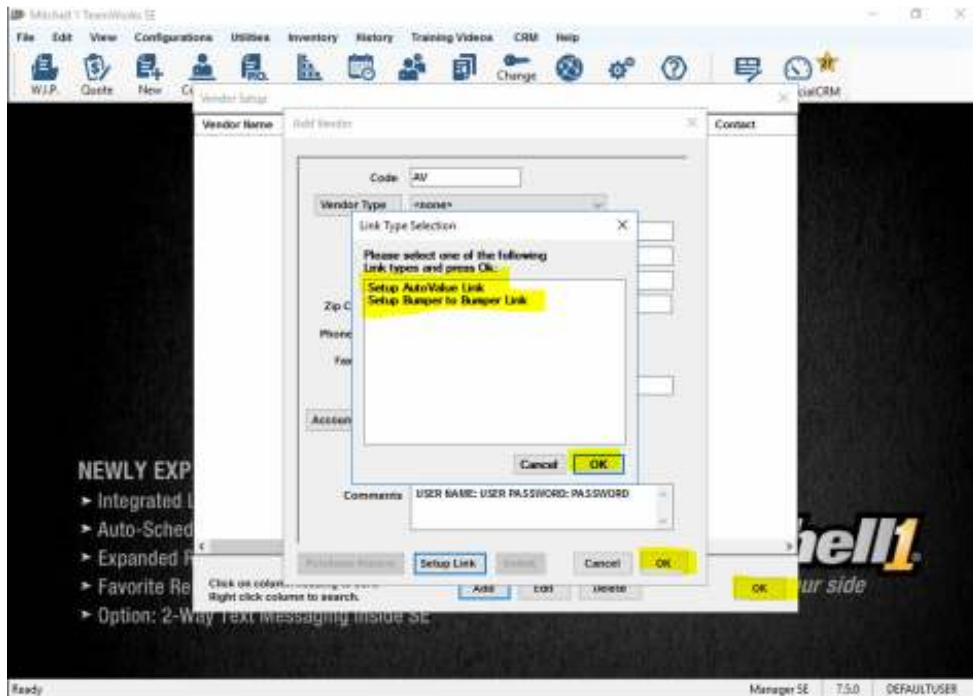


STEP 4. CONFIGURE THE VENDOR AND LINK TO YOUR CATALOG – Click Configuration / Vendor Setup

You can edit an existing Vendor and Link it to the Catalog you wish to use or Add a new one.



STEP 5 – LINKING THE VENDOR TO THE CATALOG – Click Setup Link and Choose either the Auto Value or Bumper to Bumper Catalog and Click OK. You will need to Keep clicking OK to accept all the changes. Clicking Cancel will not save your changes.



STEP 6 – COMPLETION – You can now open up a work order and you will see the Catalog You turned on and when you click on the Catalog Button it will launch MYPLACE4PARTS for whatever Supplier you linked to that button.

